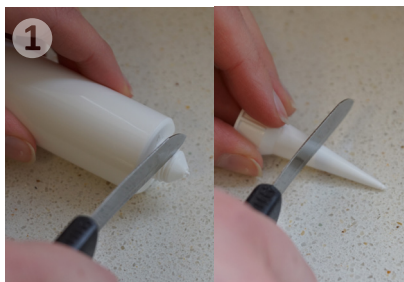


APPLICATION GUIDE

PIGLETS



Both tips (cartridge and attachment) should be cut open far enough.



Screw the attachment onto the cartridge tightly.



Loosen the piston rod by actuating the piston sleeve and pull it back out.



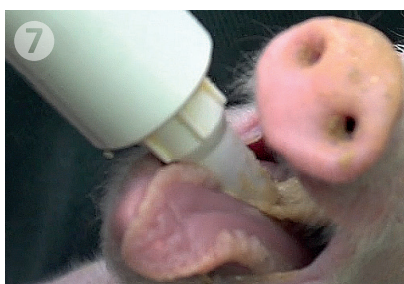
Insert the cartridge into the cartridge adaptor with a quarter turn. To simplify the insertion of the cartridge cut the seal with a knife before.



Adjust the regulator to 1. 1.5ml are dosed by pressing the handle.



The piglet is held in nutrition handle. In this case, the tips of thumb and forefinger fix the nape and the corners of the mouth. Make sure that the head is not overstretched during fixation, because the piglet otherwise can not swallow.



To apply the paste, the mouth is opened and the cartridge is placed on the posterior third of the tongue. Subsequently one swallow is done by the piglet.



After successful administration of the cartridge the piglet is put back in the litter.



ORAL APPLICATION

 **Biochem**

Feed Safety for Food Safety®